

Candy Floss Machine

Operating Instructions

This Candy Floss Machine requires a 15amp, 120 volt, 60 cycle, grounded, standard wall receptacle.

This machine must be grounded. No exceptions.

WITH MACHINE OFF

Depending on the unit you are working with, either lower the transport handle OR loosen the two transport nuts so that the bell housing floats freely.

Install the floss pan and clear plastic floss bubble onto the spinner head.

Make sure the Motor and Heat switches are in the OFF position and plug the machine into a grounded receptacle.

Put floss sugar into the spinner head – maximum 90% full.

Keep hands away from the spinner head and turn the Motor switch to the ON position.

With the Heat Adjustment Knob at the lowest setting (counter clockwise - approximately 7 o'clock), turn the Heat switch to the ON position.

Increase the Heat Adjustment Knob to approximately 12 o'clock.

Wait 30 seconds for the machine to start making floss.

If floss is not being produced then increase the Heat Adjustment Knob setting.

If you smell smoke or burning then decrease the Heat Adjustment Knob setting.

When turning the machine OFF, turn the Heat switch off first.

NEVER ADD SUGAR WHILE THE MACHINE IS RUNNING.

MAKING FLOSS

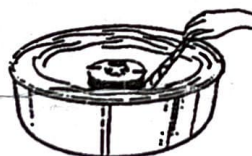


Pick a cone; if it sticks in the stack of cones, twist it off the stack.

Hold an inch or two of the pointed end of the cone between two fingers and a thumb. With a light flicking action, roll cone in the web of floss building up in the pan. Lift the cone up with the ring of floss attached and rotate the cone to wrap the floss. **DO NOT** roll floss while the cone is inside the pan. This will pack the floss too tightly.

If the floss fails to stick to the cone, pass the cone near the spinner head to pick up a "starter" of melted sugar. Lift the cone out of the pan and wrap the floss with a "figure eight" movement of the hand. This leaves giant pockets and makes the final product appear larger. Make sure room humidity is not too high, or product will be "heavy".

1. Grip cone as shown.
2. Break into web of floss with the cone.
3. Wind the sugar onto the cone.
4. Lift web of floss from the pan and roll onto the cone.



5.



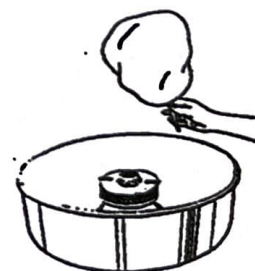
6.



7.



8.



- DO NOT PUT HANDS OR OBJECTS IN ROTATING SPINNER HEAD.
- DO NOT FILL SPINNER HEAD WITH SUGAR WHILE IT IS ROTATING.
- WEAR EYE PROTECTION
- DO NOT PUT HANDS NEAR ROTATING SPINNER HEAD,
- USE FLOSS CONE TO COLLECT COTTON CANDY.